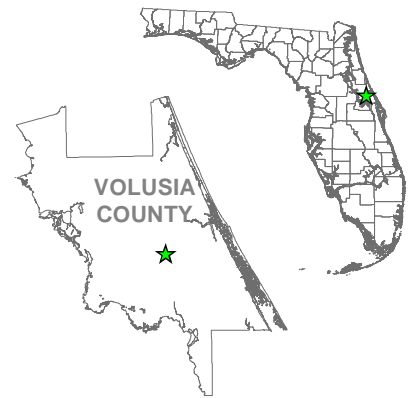
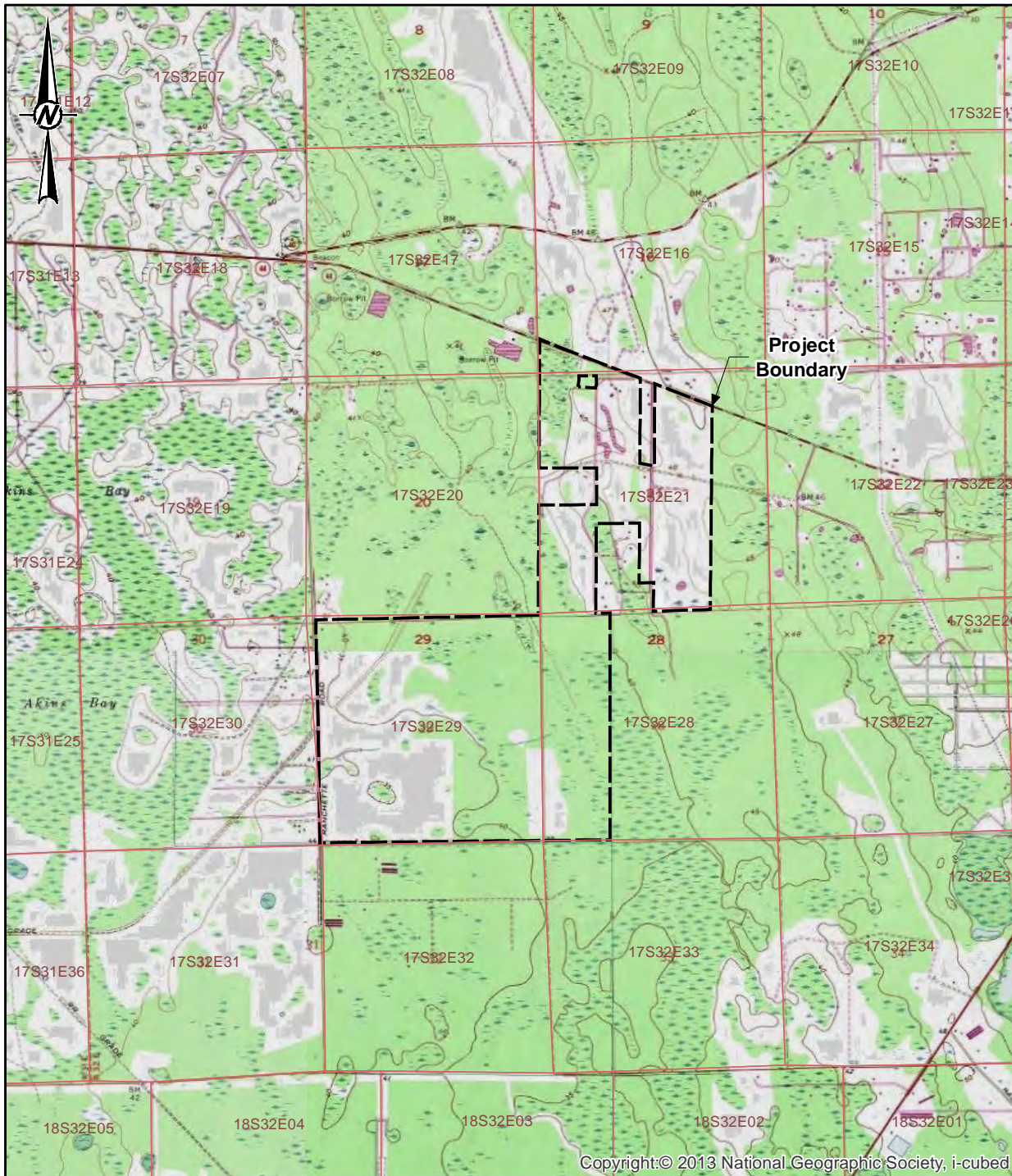
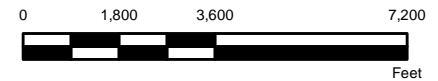


PATH:



LEGEND

Project Boundary



REFERENCE(S)

PROJECT BOUNDARY, FPL, 2017

CLIENT

FPL

PROJECT

PIONEER TRAIL
SOLAR ENERGY CENTER

TITLE

PROJECT LOCATION MAP

CONSULTANT



YYYY-MM-DD	2017-04-06
DESIGNED	NRL
PREPARED	NRL
REVIEWED	KAB
APPROVED	KAB

PROJECT NO.
1668517

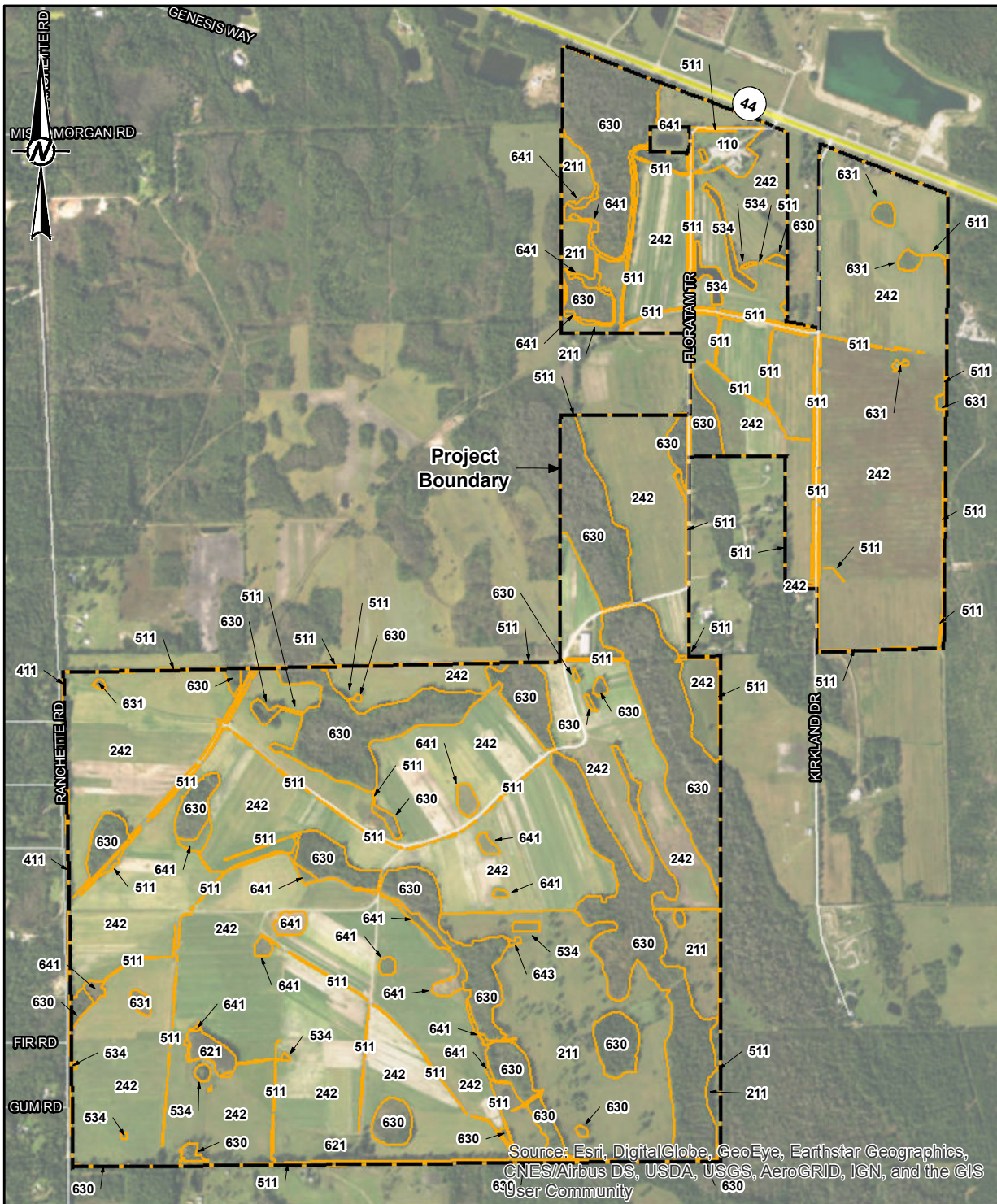
CONTROL
A001

REV.
0



FIGURE
1

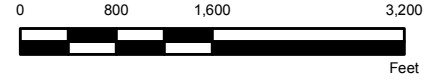
Copyright:© 2013 National Geographic Society, i-cubed

1 in IF THIS MEASUREMENT DOES NOT MATCH WHAT IS SHOWN, THE SHEET HAS BEEN MODIFIED FROM ANS/A



LEGEND

-  Project Boundary
-  Land Use Classification
 - 110: Residential, low density - less than 2 dwelling units/acre
 - 211: Improved pastures (monocult, planted forage crops)
 - 242: Sod farms
 - 411: Pine flatwoods
 - 511: Ditches
 - 534: Reservoirs <10 Acres
 - 621: Cypress
 - 630: Wetland Forested Mixed
 - 631: Wetland Scrub
 - 641: Freshwater Marshes
 - 643: Wet Prairies



REFERENCE(S)

PROJECT BOUNDARY, FPL, 2017
 LAND USE, SJRWMD AND GOLDER ASSOCIATES INC., 2017
 SERVICE LAYER CREDITS:

CLIENT
 FPL

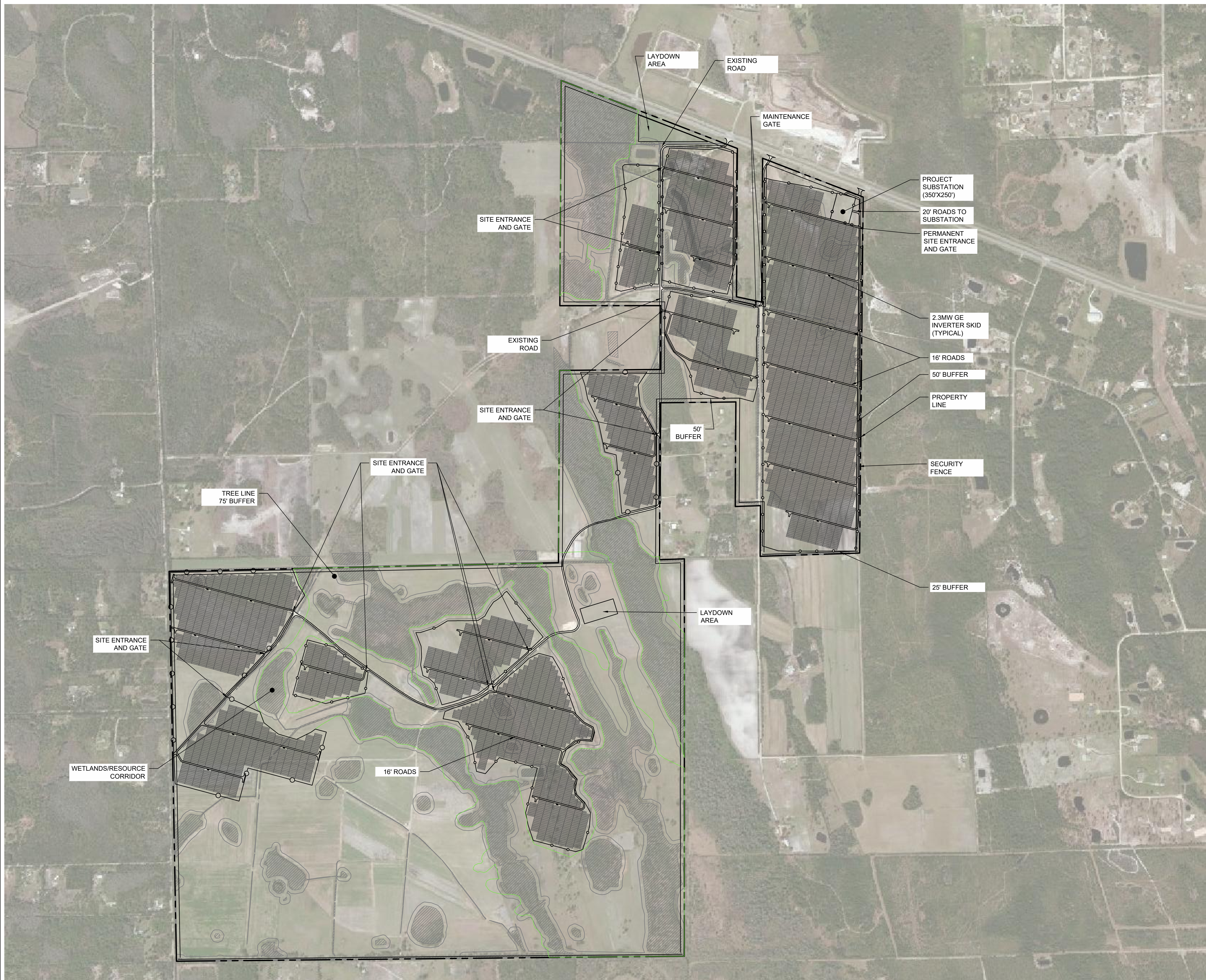
PROJECT
 PIONEER TRAIL
 SOLAR ENERGY CENTER

TITLE
 LAND USE MAP

CONSULTANT	YYYY-MM-DD	2017-04-24
	DESIGNED	NRL
	PREPARED	NRL
	REVIEWED	KAB
	APPROVED	KAB

Source: Esri, DigitalGlobe, GeoEye, Earthstar Geographics, CNES/Airbus DS, USDA, USGS, AeroGRID, IGN, and the GIS User Community

1 in IF THIS MEASUREMENT DOES NOT MATCH WHAT IS SHOWN, THE SHEET HAS BEEN MODIFIED FROM ANS/A



SHEET NOTES:

1. LOCATIONS SHOWN ARE FOR GENERAL GUIDANCE ONLY. SLOPES OF THE SITE ARE NOT DEPICTED AND LOCATIONS MUST BE VERIFIED ON SITE BEFORE INSTALLATION.

SYSTEM SPECIFICATIONS:

SYSTEM STC DC RATING (MW)	130.41
SYSTEM AC CAPACITY (MW)	80.50
SYSTEM AC RATING AT POI (MW)	74.50
DC/AC RATIO AT POI	1.750
MODULE MODEL	HANWHA Q.PLUS 355W
MODULE STC DC RATING (W)	355
MODULE COUNT	367343
MODULES PER STRING	29
STRING COUNT	12667
INVERTER MODEL	GE 1.15MVA 1500V
INVERTER RATING (MW)	1.15
QUANTITY OF INVERTERS	70
TRANSFORMER RATING (MVA)	2.30
QUANTITY OF TRANSFORMERS	35
DC SYSTEM VOLTAGE (V)	1500
INTERCONNECTION VOLTAGE (KV)	-
TRANSMISSION LENGTH (MILES)	-
RACKING SYSTEM	FIXED TILT
MODULE TILT	20°
AZIMUTH	195°
GCR	0.55 (PROJECTED)
ASHRAE 2% DESIGN BULB TEMP MAX (°C)	34°
ASHRAE EXTREME ANNUAL MEAN MINIMUM DRY-BULB TEMP	-1°
PROPERTY AREA (ACRES)	1193
FENCED AREA (ACRES)	436
FENCING LENGTH (L.F.)	58442
ROADS (L.F.)	37073

LEGEND

- PROPERTY LINE
- FENCE LINE
- ROAD
- OVERHEAD ELECTRICAL

REVAMP
ENGINEERING, INC.

360 Lily Street, #5
San Francisco, CA 94102
www.revamp-eng.com

THIS DOCUMENT IS THE PROPERTY OF REVAMP ENGINEERING, INC. AND CONTAINS CONFIDENTIAL INFORMATION. ITS RECEIPT OR POSSESSION DOES NOT CONVEY ANY RIGHTS TO REPRODUCE, MANUFACTURE, USE, OR SELL ANYTHING IT MAY DESCRIBE. NO PART IS TO BE DISCLOSED WITHOUT WRITTEN PERMISSION FROM REVAMP ENGINEERING, INC.

ENGINEER'S STAMP

CLIENT



PROJECT NAME
PIONEER TRAIL

SITE LOCATION
KISSIMMEE PRAIRIE PRESERVE
27°37'00.0"N, 81°09'30.0"W

PRELIMINARY - NOT FOR CONSTRUCTION

DRAWING ISSUE

- J 05/08/2017 PER COMMENTS
- K 05/11/2017 PER COMMENTS

REVISION ISSUE

DRAWN BY: KB CHECKED BY: TN

PROJECT NO.: 16054

DRAWING TITLE
1.75 DC TO AC
RATION FIXED
TILT OVERALL
SITE LAYOUT

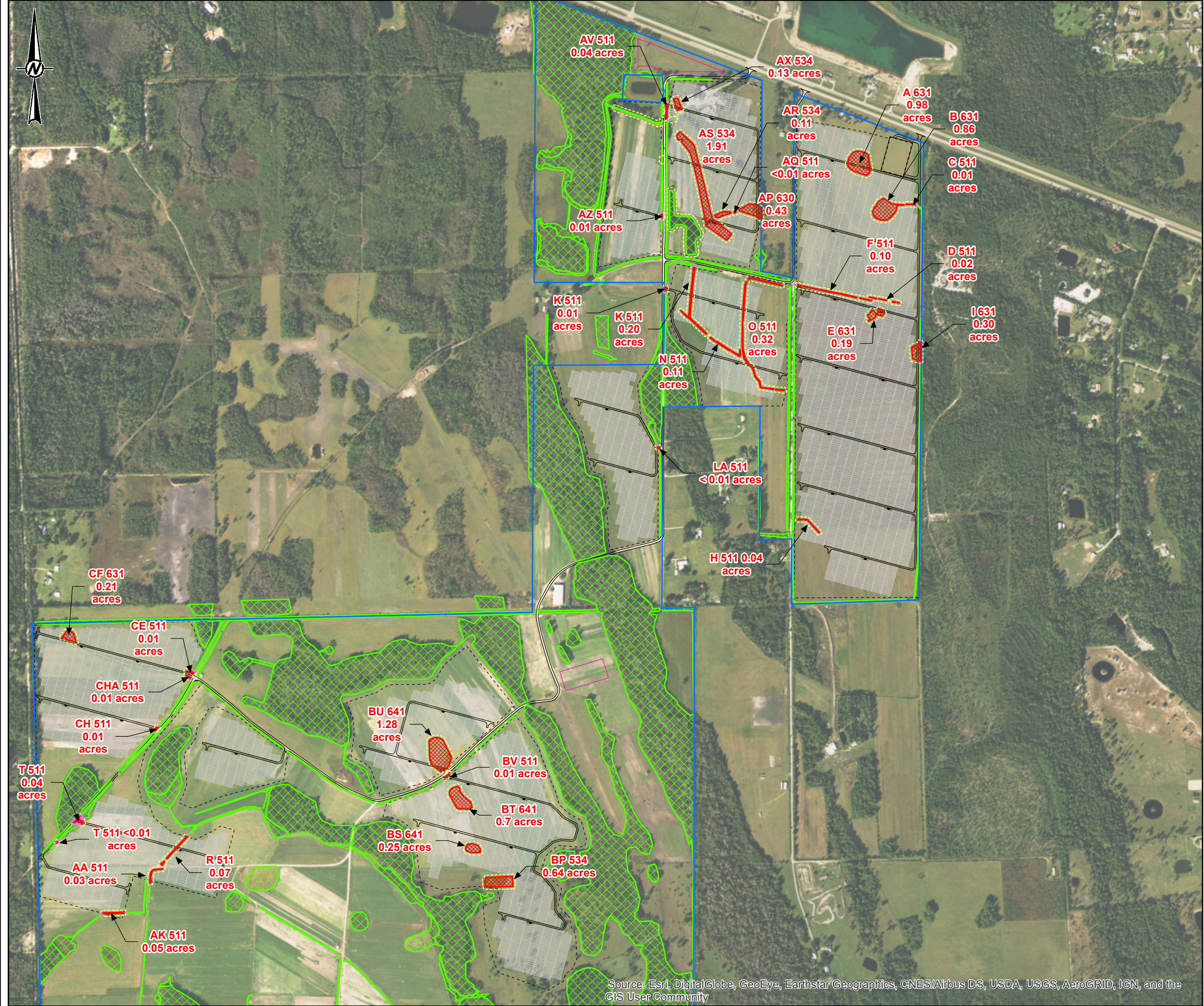
DRAWING NUMBER

E201

1 FIXED OVERALL SITE LAYOUT

1" = 600' - 0"
0' 300' 600' 1200'





LEGEND

- Property Boundary
- Access Roads
- Fence
- Laydown Areas
- Inverters
- Solar Racks
- Wetlands
- 25ft Buffer
- Wetland Impacts
- Secondary Wetland Impacts

Wetland ID	FLUCFS Code	Habitat Description	Direct Impact (ac.)	Secondary Impact (ac.)
A	631	Wetland Scrub	0.98	
B	631	Wetland Scrub	0.86	
C	511	Ditches	0.01	<0.01
D	511	Ditches	0.02	
E	631	Wetland Scrub	0.19	
F	511	Ditches	0.10	<0.01
H	511	Ditches	0.04	
I	511	Ditches	-	0.01
I	631	Wetland Scrub	0.30	
K	511	Ditches	0.21	0.03
N	511	Ditches	0.11	
O	511	Ditches	0.32	
R	511	Ditches	0.07	0.01
T	511	Ditches	0.04	0.1
AA	511	Ditches	0.03	<0.01
AK	511	Ditches	0.05	0.01
AP	630	Wetland Forested Mixed	0.43	
AQ	511	Ditches	0.00	
AR	534	Reservoirs <10 Acres	0.11	
AS	534	Reservoirs <10 Acres	1.91	
AU	511	Ditches	-	0.01
AV	511	Ditches	0.04	0.01
AX	534	Reservoirs <10 Acres	0.13	
AZ	511	Ditches	0.01	0.02
BP	534	Reservoirs <10 Acres	0.64	
BS	641	Freshwater Marshes	0.25	
BT	641	Freshwater Marshes	0.70	
BU	641	Freshwater Marshes	1.28	
BV	511	Ditches	0.01	<0.01
CE	511	Ditches	0.01	0.02
CF	631	Wetland Scrub	0.21	
CG	630	Wetland Forested Mixed	-	0.01
CH	511	Ditches	0.01	0.02
CHA	511	Ditches	0.01	0.02
LA	511	Ditches	0.00	0.01
Total			9.08	0.28



REFERENCE(S)
 WETLANDS, CULPEPPER & TERPENING, INC., 2017
 WETLAND IMPACTS, GOLDER ASSOCIATES INC., 2017
 FACILITY LAYOUT, REVAMP ENGINEERING INC., 2017

CLIENT
FPL

PROJECT
PIONEER TRAIL SOLAR ENERGY CENTER

TITLE
PRELIMINARY WETLAND IMPACTS

CONSULTANT	DATE
YYYY-MM-DD	2017-06-28
DESIGNED	NRL
PREPARED	NRL
REVIEWED	KAB
APPROVED	KAB

Source: Esri, DigitalGlobe, GeoEye, Earthstar Geographics, CNES/Airbus DS, USDA, USGS, AeroGRID, IGN, and the GIS User Community

C:\PROJECTS\FPL\1668517_1668517_0000_PROD\PRODUCTION\1668517_0000_FacilityWetlandImpacts.mxd

1 in IF THIS MEASUREMENT DOES NOT MATCH WHAT IS SHOWN, THE SHEET SIZE HAS BEEN MODIFIED FROM ANSI B